



# **POINTSCORE SERIES 2025-2026**

7 September 2025 to 22 March 2026

## **SAILING INSTRUCTIONS**

### **1 RULES**

- 1.1** The series will be governed by the rules as defined in The Racing Rules of Sailing (RRS) 2025 - 2028 except for changes indicated in relevant paragraphs in the Notice of Race and these Sailing Instructions. The Prescriptions and Special Regulations of Australian Sailing (AS) will apply.
- 1.2** As notified in the Notice of Race (NoR) and, in addition, that: SI 4.3 changes RRS Race Signals, SI 8.3 changes RRS 32.1, SI 10.1 changes RRS 26, SI 10.4 changes RRS A5, and SI 12.3 changes RRS 35 and A5.

### **2 CHANGE TO SAILING INSTRUCTIONS**

- 2.1** Any change to the sailing instructions will be posted before 1200 hours on the day it will take effect, except that any change to the schedule of races will be posted by 2000 hours on the day before it will take effect. These will be posted on the Official Notice Board, for a minimum of 1 week. They shall also be posted, within 1 week, on the CYC Website, [www.canberrayc.com](http://www.canberrayc.com), until the end of the event. Race signals - Code Flag "L" ashore applies for the first race day after each change is posted.
- 2.2** Changes to a sailing instruction may also be made on the water or when a Race Committee Boat (RCB) / Race Control Tower (RCT) is on station, RRS Race Signals - Code Flag "L" Afloat applies.

### **3 NOTICE TO COMPETITORS**

- 3.1** As detailed in NoR 2.
- 3.2** A competitor briefing will happen before the race if advised via sign on SMS.

### **4 SIGNALS MADE ASHORE**

- 4.1** Signals made ashore will be displayed at the Race Control Tower (RCT).
- 4.2** When the AP flag is displayed from the RCT when the Starting (Orange) Flag is not displayed, races not started are postponed and the first warning signal will be made 30 minutes after the AP flag is removed.
- 4.3** When the AP flag is displayed from the RCT when the Starting (Orange) Flag is displayed, races not started are postponed and the warning signal will be made 1 minute after the AP flag is removed. This changes RRS Race Signals.

### **5 SCHEDULE OF RACES**

- 5.1** The schedule of races is contained in the CYC Sailing Calendar 2025-2026. The warning signal for the first Division to be started shall be 1400 hours. The Race Officer may combine the starts of two or more Divisions.

## 6 FLAGS

### 6.1 Division Flags

Division 1	Off the beach multihulls	Numeral pennant 1
Division 2	Trailable Yachts	Numeral pennant 2
Division 3	Multi-handed Dinghies including Flying 15 & VX One (119 & below) excluding Cherub	Numeral pennant 3
Division 4	Solo Dinghies (119 & below)	Numeral pennant 4
Division 5	Dinghies (120 – 132) including Cherub	Numeral pennant 5
Division 6	Dinghies (133 and above excluding Optimists)	Numeral pennant 6
Division 7	Optimists	Numeral pennant 7

### 6.2 Signal Flags

Course Flag	Code flag A, B, C or D – refer to Illustration A
Rounding Direction Flag	Red – course marks are to be left to Port Green – course marks are to be left to Starboard
Starting Flag	Orange flag
Finish Flag	Blue flag

6.3 When displaying the Starting or Finish flag, the RCT / RCB is considered to be on-station.

## 7 COURSES

7.1 The appropriate course flag shall be displayed from the On-Station RCB/RCT prior to and during the start sequence. In addition, the rounding direction flag shall be flown under the course flag to indicate which side the boats shall leave course marks.

7.2 The diagrams in Illustration A (attached) show the courses and the order in which marks are to be passed. Diagrams are indicative only and do not specify an exact position for any part of the course.

## 8 SHORTENED COURSE

8.1 Courses may be shortened in accordance with RRS 32.2(a), or by use of the Shortened Course Mark.

8.2 The Shortened Course Mark is created by placing a 'sock' over an existing mark of the course applicable to Divisions for which the course is being shortened and a sound signal made. When the leading yacht in each Division rounds the Shortened Course Mark, it shall proceed directly to the finish line (at the RCB / RCT), crossing it from the direction of the Shortened Course Mark. The remaining competitors in each Division shall sail the required course as shortened and then proceed to the finish line.

8.3 The race committee may shorten a race after starting due to a change in wind conditions resulting in a severe lack of wind for a foreseeable future. The race committee shall not shorten under this SI without considering the consequences for all boats in the race or series. This changes RRS 32.1.

## **9 MARKS**

- 9.1** Course marks for Divisions 1, 2 and 3      Yellow cylindrical buoys  
Course marks for Divisions 4, 5, 6 and 7      Pink cylindrical buoys  
Starting Mark      Orange cylindrical buoy  
Finishing Mark      Black and white cylindrical buoy (or an orange cylindrical buoy may be used)  
Shortened Course mark      Blue with white band and black 'S' displayed (a 'sock' placed over the pink, green and/or yellow course mark(s) applicable to the Divisions for which the course is being shortened)
- Course marks may be numbered
  - Course mark 1 may have a coloured band to differentiate it from other rounding marks

- 9.2** When circumstances such as numbers racing that day in each division, weather or other factors so dictate, the Race Committee may elect not to lay the course marks designated in 9.1 above for Divisions 4, 5, 6 and 7. In that case, all divisions will race around the Yellow marks. This will be advised to competitors by display of Code flag R on the RCT/RCB prior to the first warning signal.

## **10 THE START**

- 10.1** Races will be started using RRS 26 with the warning signal given 3 minutes before the starting signal and the preparatory signal given 2 minutes before the starting signal. Warning signals for Divisions will be as specified in SI 6.1. This changes RRS 26.
- 10.2** The starting line will be between the Starting Mark and the flagstaff on the RCB/RCT displaying the Starting Flag.
- 10.3** Boats whose Warning Signal has not been made shall keep clear of both the starting area and keep clear of all boats that are in their starting sequence.
- 10.4** A boat that is in the starting area and does not start within 10 minutes after her starting signal will be scored Did Not Start (DNS), in accordance with the NoR 10.6, without a hearing. This changes RRS A5.

## **11 THE FINISH**

- 11.1** The finishing line will be between the Finishing Mark and the flagstaff of the RCB/RCT displaying the Finish Flag or, when a race is shortened in accordance with RRS 32.2(a), the finishing line will be between a mark of the course and the flagstaff of the RCB/RCT displaying an 'S' flag.
- 11.2** Boats shall keep clear of, and not cross, the finish line unless they are finishing.

## **12 TIME LIMITS**

- 12.1** The intention is to have races of:
- 120 minutes duration for Division 2
  - 90 minutes duration for Divisions 1 and 3
  - 75 minutes duration for Divisions 4, 5, 6 and 7
- 12.2** The intention in SI 12.1 in no way constitutes a minimum or maximum time limit for a race. The failure of a race to be of this duration will not constitute grounds for redress.

**12.3** Boats that do not finish within the following time limits set out in SI 12.3 (a) and (b) below after the first boat in their respective Division to sail the course and finish, will be scored Did Not Finish, in accordance with the NoR 10.6, without a hearing. This changes RRS 35 and A5.

(a) for Divisions 1, 2, 3 - 60 minutes

(b) for Divisions 4, 5, 6 and 7 - 30 minutes

### **13 PROTESTS AND REQUESTS FOR REDRESS**

**13.1** Protest forms are in the Sailors Cabin. Protests shall be submitted in accordance with RRS 61.3 with the time limit for competitors being 45 minutes after the finish of the last boat of all Divisions.

**13.2** Protests shall be in writing and shall be delivered to the Race Officer. Protests will be heard (at the CYC and at a time to be advised) usually on the Tuesday evening following the race day or as soon as possible thereafter and in the order of receipt or in the most logical order determined by the Protest Committee.

### **14 SCORING**

**14.1** As detailed in NoR 10.

### **15 SAFETY REGULATIONS**

**15.1** A competitor that has signed on but does not start, or that retires from a race shall notify the Race Committee as soon as possible.

### **16 SIGN – ON**

**16.1** Competitors are required to Sign-On before each race.

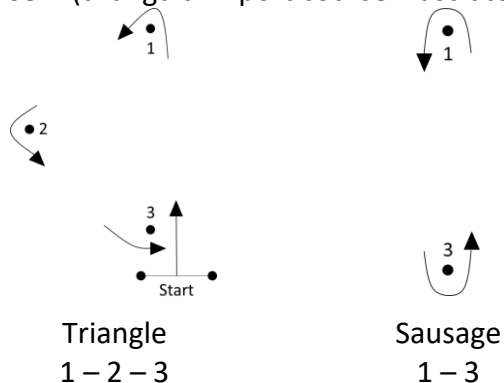
**16.2** Sign On will be electronic via the SailSYS SMS Sign On system.

**16.3** The time limit for Sign-On is 30 minutes before the first scheduled warning signal of the first race of the day.

**16.4** Failure to Sign-On will result in a score of Did Not Compete (DNC) for that race, refer to NoR 10.6.

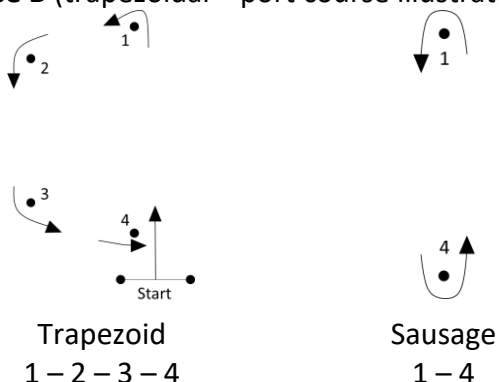
## Illustration A (Rounding marks may be numbered)

### Course A (triangular – port course illustrated)



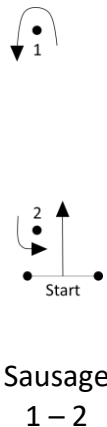
Divisions	Marks
1	<b>Start 1-3, 1-2-3, 1-3, 1-2-3, 1-2-Finish</b>
2,3,4	<b>Start 1-2-3, 1-3, 1-2-3, 1-2-Finish</b>
5,6	<b>Start 1-2-3, 1-3, 1-2-Finish</b>
7	<b>Start 1-2-3, 1-2-Finish</b>

### Course B (trapezoidal – port course illustrated)



Divisions	Marks
1	<b>Start 1-4, 1-2-3-4, 1-4, 1-2-3-4, 1-2-3-Finish</b>
2,3,4	<b>Start 1-2-3-4 -1-4- 1-2-3-4 -1-2-3-Finish</b>
5,6	<b>Start 1-2-3-4 -1-4- 1-2-3-Finish</b>
7	<b>Start 1-2-3-4 -1-2-3-Finish</b>

### Course C (Windward return – port course illustrated)



Divisions	Marks
1	<b>Start 1-2, 1-2, 1-2, 1-2, 1-Finish</b>
2,3,4	<b>Start 1-2, 1-2, 1-2, 1-Finish</b>
5,6	<b>Start 1-2, 1-2, 1-Finish</b>
7	<b>Start 1-2, 1-Finish</b>

## 17 Multi Race Days

**17.1** SI 17 Applies to listed Divisions on Pointscore “Multi Race Days” (MRDs) as marked in the CYC Sailing Calendar 2025 – 2026. The listed Divisions are 1, 3, 4, 5, 6 & 7. MRDs are 28 September 2025, 9 November 2025, 30 November 2025, 8 February 2026 & 22 February 2026.

**17.2** Up to five races will be held for each of those divisions on MRDs.

**17.3** On MRDs, the following changes to the standard Pointscore Sailing Instructions apply ONLY for listed divisions.

SI 5.1 is changed to read: The schedule of races is contained in the CYC Sailing Calendar 2025-2026. The warning signal for the first MRD Division shall be as soon as practicable after the start sequences for Division 2 is completed, with that start sequences scheduled to commence from 1400 hours. The Race Officer may combine the starts of two or more Divisions.

SI 6.2 is changed to read: Signal Flags

Course Flag	Code flag T or W – refer to Illustration B
Rounding Direction Flag	Red – course marks are to be left to Port Green – course marks are to be left to Starboard
Starting Flag	Orange flag
Finish Flag	Yellow (or a blue flag may be used)

SI 7.2 is changed to read: The diagrams in Illustration B (attached) show the courses and the order in which marks are to be passed. Diagrams are indicative only and do not specify an exact position for any part of the course.

SI 7.3 is added, and reads: The RCB will designate which course a particular Division will sail by displaying flip cards with the course code during that Division’s start sequence. This code will be either an I or O to indicate inner or outer course with a number to indicate the number of laps.

SI 9.1 is changed to read : Marks

Course mark 1A (Divisions 4, 5, 6 and 7)	Pink cylindrical buoy
Course mark 1B (Divisions 1 and 3)	Green cylindrical buoy
Course marks 2, 3 & 4	Pink cylindrical buoys
Starting Mark	Orange cylindrical buoy
Offset clearance mark	Orange ball, small; may be used at marks 1A, 1B and 2
Finishing Mark	Black and white cylindrical buoy (or an orange cylindrical buoy may be used)
Shortened Course mark	Blue with white band and black ‘S’ displayed
<ul style="list-style-type: none"><li>• Course marks may be numbered</li><li>• Course mark 1 may have a coloured band to differentiate it from other rounding marks</li></ul>	

SI 9.2 does not apply

SI 10.5 is added, and reads: Starting sequences for the second and subsequent races for each individual Division on a MRD will be commenced as soon as the Race Committee determines that it is appropriate to do so. This will not necessarily be in Division order.

SI 12.1 is changed to read: The intention is to conduct races of about 25-30 minutes duration for all Divisions, noting that this intention in no way constitutes a minimum or maximum time limit for a race and that failure of a race to be of this duration will not constitute grounds for redress.

SI 12.2 is changed to read: Boats not finishing within 10 minutes after the first boat in their respective divisions to sail the course and finish, will be scored Did Not Finish, in accordance with the NoR paragraph 10.4, without a hearing. This changes RRS 35 and A5.

***All marks left to port***

Refer to Table 9.1 above to determine whether to sail around 1A or 1B whenever a 1 is listed below.

Inner (I)		Outer (O)	
I1	Start - 1 - Finish	O1	Start - 1 - 2 - Finish
I2	Start - 1 - 4 - 1- Finish	O2	Start - 1 - 2 - 3 - 2 - Finish
I3	Start - 1 - 4 - 1 - 4 - 1 - Finish	O3	Start - 1 - 2 - 3 - 2 - 3 - 2 - Finish
I4	Start - 1 - 4 - 1 - 4 - 1 - 4 - 1- Finish	O4	Start - 1 - 2 - 3 - 2 - 3 - 2 - 3 - 2 - Finish

Offset (when used)

Offset (when used)

Refer to Table 9.1 above to determine whether to sail around 1A or 1B whenever a 1 is listed below.

1	Start - 1 - 2 - Finish
2	Start - 1 - 2 - 1 - 2 - Finish
3	Start - 1 - 2 - 1 - 2 - 1 - 2 - Finish
4	Start - 1 - 2 - 1 - 2 - 1 - 2 - 1 - 2 - Finish

CYC Sailing Committee September 2025